

# Primavera® Contractor

## The easy-to-use, affordable way to manage your projects

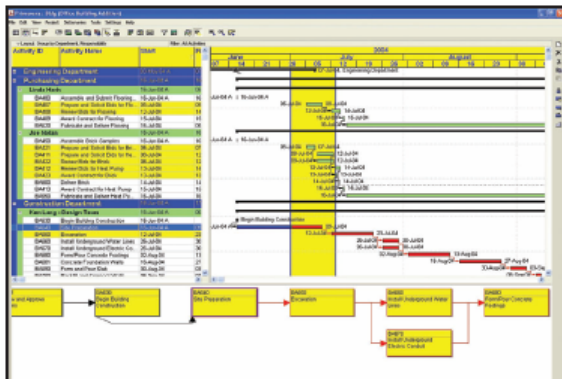
Primavera Contractor was built to get you planning and scheduling immediately – right out of the box. With easy and intuitive navigation, you will begin planning and controlling your project faster than you ever thought possible ensuring that you get paid on time.

### Plan and Schedule Projects Quickly and Easily

Add activities quickly and easily, drag and drop activity bars to add constraints or modify your plan, and still take full advantage of Critical Path Scheduling. Interactive, flexible PERT and Gantt charts make it simple for general contractors to communicate with the client as well as other designers and contractors. Future Period Bucket Planning enables Planner/Scheduler to enter a custom distribution, or spread, per resource or role assignment, to model resource requirements in a way that truly reflects how the work is planned and performed. With Primavera Contractor, planning the work and managing changes is quick and easy.

### Communicate Status

The Send Project feature enables contractors to e-mail schedules in one simple step to be fully incorporated into the general contractor's project master schedule. Primavera Contractor can also be used to create the master schedule itself. Easily integrate and approve contractor schedules and quickly import and export Microsoft Project and Microsoft Excel data, Primavera Contractor project plans, as well as other industry-standard Primavera software data. With the flexible scheduling power of Primavera Contractor, it simply doesn't get any easier to synchronize your projects.



Manage the critical path to finish a project on time while maintaining a handle on the budget and costs.

### Improve Productivity and Coordination

With the new Progress Spotlight, you can look ahead as you plan for the upcoming day, week, or month. By planning activities and linking them to resources, you have everything you need to get the job done. Easily coordinate labor, material, equipment, and subcontractors to ensure on-schedule, on-budget completion. The new Baseline Maintenance tool manages change and automatically adjusts schedules as necessary. With Primavera Contractor, you'll always know what you have completed and what will happen next, for quick and easy communication.

Office Building Addition  
Report Date 08-Sep-04 10:33

Project Start 01-May-04  
Project Finish 15-Mar-05  
Date Data 25-Jun-04

### SR-01 Classic Schedule Report - Sorted by ES, TF

Activity ID	Org	Bar	Bar	%	Dept	Activity Name	Early Start	Early Finish	Late Start	Total Float
-------------	-----	-----	-----	---	------	---------------	-------------	--------------	------------	-------------

### Project Differences Report

Comparing Office Building Addition to Office Building Addition - 01

Activity ID: [Office Building Addition - 01] [01] [01] [01]

Date Data: 08/09/04 13:30

Activity ID	Activity Name	New From Float	Old From Float
04105	Excavate Second Floor	010 D	1040 D
04107	Foundation Phase Concrete	008 D	108 D
04108	Check-In Phase Design	000 D	104 D
04109	Assemble Technical Data for Head Pump	Value not specified in the database	0 D
04110	Deliver Bids	000 D	000 D
04111	Begin Structural Frame	020 D	102 D
04112	Procure and Deliver Framing	000 D	000 D
04113	Review and Approve Changes	Value not specified in the database	0 D

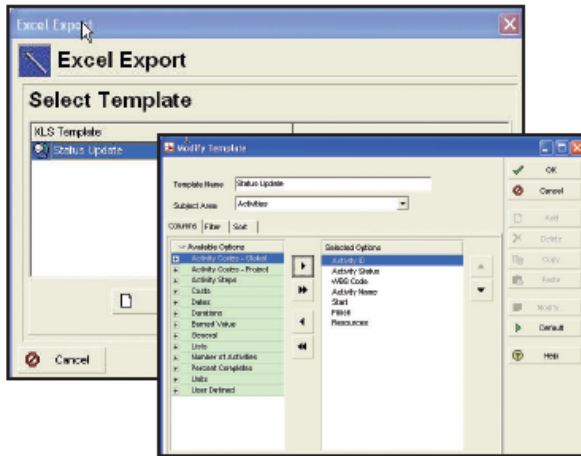
Industry-standard reports with Claim Digger functionality let you analyze project progress.

### Maintain Control

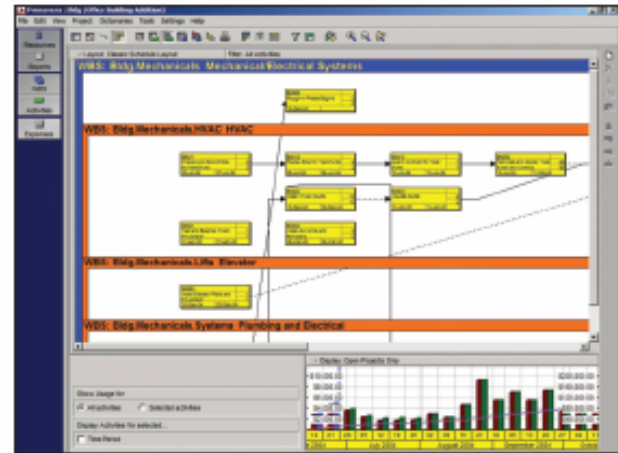
Primavera Contractor allows you to clearly define team accountabilities by assigning activities to each contractor. Compare your time-based budget to actual costs and work performed while maintaining independent estimates of cost to complete. Baselines let you keep track of "what happened" and "what changed" every step of the way. Create unlimited "what-if?" scenarios to explore alternatives. Best of all, Primavera Contractor automatically compares schedules from one month to the next with its unique Claim Digger™ technology.



# Key Features



Simple import and export makes communication easy.



Primavera Contractor provides the best graphic representation of the status and organization of your project.

## Project Planning

- Plan projects fast with project templates
- Future Period Bucket Planning
- Manage multiple projects
- Assign unlimited hierarchical activity codes
- Organize with true Work Breakdown Structure support

## Scheduling and Project Analysis

- Critical Path Scheduling of projects with up to 2,000 activities
- Control budgets, changes, and estimates at completion
- Manually or automatically update progress on activities
- Analyze schedule changes with unique Claim Digger technology
- Progress Spotlight identifies next month's tasks and effectively manages changes in project scope with Baseline Maintenance

## Schedule Coordination

- E-mail entire projects with simple Send Project feature
- Automate schedule integration with import/export wizard
- Exchange data seamlessly with all Primavera scheduling products and Primavera Contract Manager
- Import and export Microsoft Project@ schedules
- Import and export project and resource updates
- Combine schedule data from Microsoft Excel@ using import/export

## Hardware Requirements

- 256MB RAM required (512MB recommended)
- 500MB minimum storage required
- Full printer and plotter support

## Graphics and Reporting

- Create attractive and fully customizable Gantt charts
- Identify driving relationships using PERT diagrams with Trace Logic
- Customize more than 150 industry-standard construction reports
- Save time with easy-to-use report wizard
- Insert photos, drawings, and text in any graphic
- Easy-to-use features enable contractors to undo tasks, combine schedule data, and transfer information.

## Resource and Cost Management

- Code unlimited assignments and resources
- Allocate resources to activities using distribution curves
- Compare baseline budget to actual units and costs
- Forecast cost at completion based on percent complete
- Track regular hours, overtime, and shift differentials for accurate forecasting



**RedBird Corporation provides Contractor Version 6.1. See Details ...**

### WORLDWIDE HEADQUARTERS

Three Bala Plaza West,  
Bala Cynwyd, PA 19004, USA  
Phone: +1.610.667.8600, 1.800.423.0245  
Fax: +1.610.667.7894  
info@primavera.com

### INTERNATIONAL HEADQUARTERS

3rd Floor, Metro Building, 1 Butterwick  
London W6 8DL, United Kingdom  
Phone: +44.20.8563.5500  
Fax: +44.20.8563.5533  
intlinfo@primavera.com

 **PRIMAVERA**  
www.primavera.com