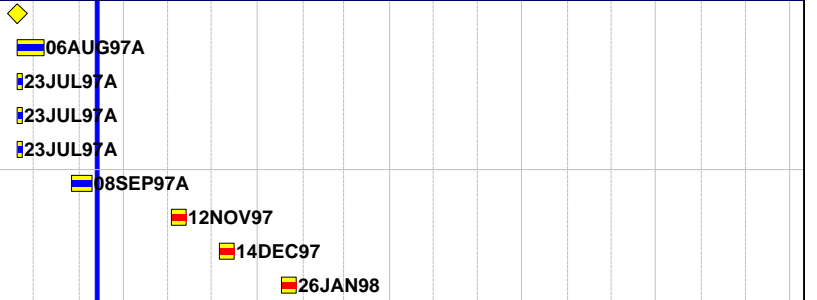


Activity ID	Activity Description	J J A S O N D J F M A M J J A S O N D A																	
		J	J	A	S	O	N	D	J	F	M	A	M	J	J	A	S	O	N

## Update Corporate Loan Reporting

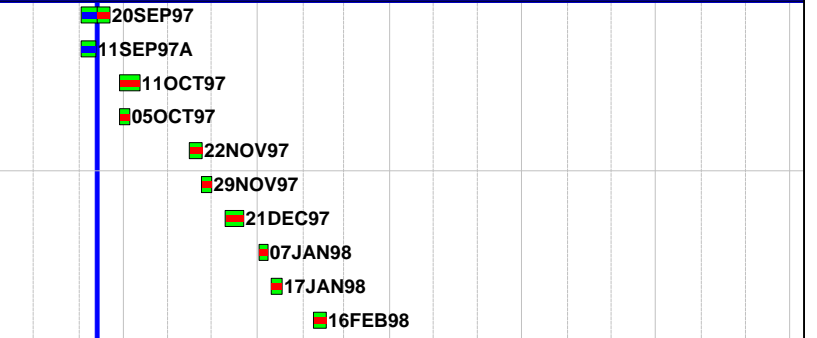
### Analysis Phase

RPANYL0245	Initiation of EIS report project
RPANYL0250	Determine Iterations
RPANYL0255	Identify Business Requirements
RPANYL0260	Analyze User Tasks and Workflow
RPANYL0265	Define Business Process Improvements
RPANYL0270	Establish Prototyping Environment
RPANYL0275	Identify the Training Program Required
RPANYL0280	Establish Technical Working Environment
RPANYL0919	Review Project Plan & Create Stage Report



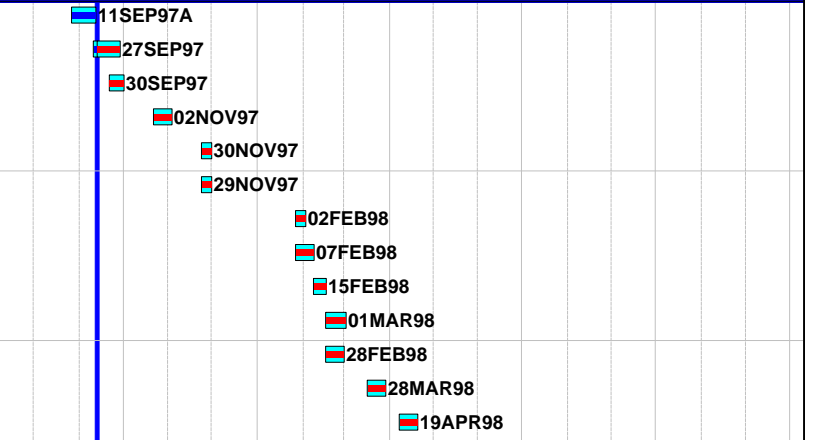
### Design Phase

RPDESG0540	Design User Interface
RPDESG0545	Develop Prototype Components
RPDESG0535	Develop Data Model
RPDESG1171	Review Testing Design
RPDESG0570	Develop Training Materials
RPDESG0575	Pilot User Training and Procedures
RPDESG0550	Exercise the Prototype
RPDESG0555	Update Design Models
RPDESG0560	Develop Schedule for Next Stage
RPDESG0565	Design and Build Application Components



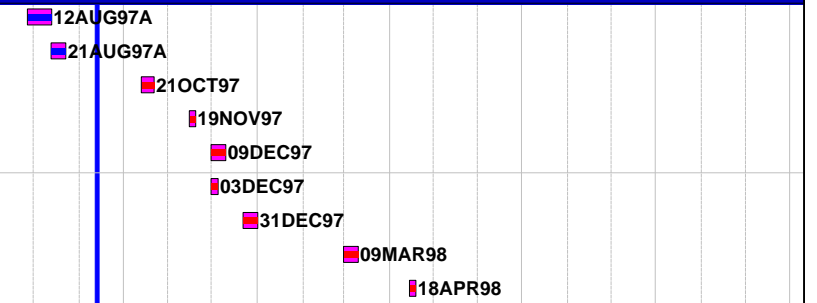
### Coding Phase

RPCODE0675	Create Test Plan
RPCODE0680	Create System and Integration Test Scripts
RPCODE0660	Create the Prototype Build
RPCODE0695	Create User Procedure Guides
RPCODE0655	Create Unit Test Cases and Scripts
RPCODE0700	Create Acceptance Test Scripts
RPCODE0665	Produce Iterative Build Plan
RPCODE0670	Determine Build Activities
RPCODE0685	Create Final Database Application
RPCODE1770	Convert Static and Acquire New Data
RPCODE0690	Create Application Unit Test Scripts
RPCODE1836	Convert Dynamic Data & Evaluate Results
RPCODE0705	Collate and Store Metrics



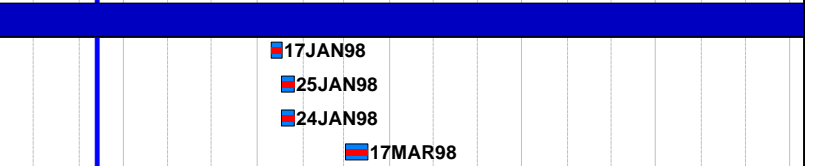
### Testing Phase

RPTTEST0311	Select Iteration Activities
RPTTEST0435	Define Test Strategy and Acceptance Criteria
RPTTEST0450	Perform Integration and System Testing
RPTTEST1952	Optimize Technical & Working Environments
RPTTEST0440	Unit Test Prototype Components
RPTTEST1581	Perform & Review Acceptance Tests
RPTTEST0772	Review Prototype
RPTTEST0445	Unit Test Application Components
RPTTEST0455	Analyze Product Quality



### Implementation Phase

RPIMPL1755	Create Training Plan
RPIMPL0955	Conduct End Stage Assessment
RPIMPL1760	Finalize Deployment Plan
RPIMPL1765	Install Application Software



Project Start	22JUN97		Early Bar
Project Finish	06JAN99		Progress Bar
Data Date	14SEP97		Critical Activity
Run Date	25MAR99		

SWDV

Sheet 1 of 5

TSNS Financial Institution  
Planned IS Development Projects  
Classic Schedule Layout

Activity ID	Activity Description	J J A S O N D J F M A M J J A S O N D A																			
		J	J	A	S	O	N	D	J	F	M	A	M	J	J	A	S	O	N	D	A
<b>Implementation Phase</b>																					
RPIMPL1770	Cut Over to New System																				07APR98
RPIMPL0960	Provide User Operational Procedures																				14APR98
RPIMPL0965	Obtain User Sign-Off																				18APR98
<b>New C/S Branch Loan System</b>																					
<b>Analysis Phase</b>																					
CSANYL1755	Client/Server Project Initiation																				
CSANYL1760	Investigate Current Business Process																				23JUL97A
CSANYL1765	Investigate Business Organization																				30JUL97A
CSANYL1770	Identify Current Business Process																				07AUG97A
CSANYL1780	Identify Business Requirements																				17AUG97A
CSANYL1775	Review Results of Business Process Investigation																				18AUG97A
CSANYL1785	Identify Process Improvement Opportunities																				25AUG97A
CSANYL1790	Identify New Technology Opportunities																				31AUG97A
CSANYL1795	Define Business Process Improvements																				02SEP97A
CSANYL1800	Consider Buy/Build/Sourcing Options																				19OCT97
CSANYL1805	Establish Program Mgmt. Procedures																				05NOV97
CSANYL1810	Define Critical Technical Requirements																				06DEC97
CSANYL1815	Analyze Technical Risk																				11DEC97
CSANYL1820	Establish Test Strategy & Control Procedures																				11DEC97
CSANYL1825	Select Iteration Activities																				14FEB98
CSANYL1830	Review Results of Work Process and Object Model																				07APR98
CSANYL1835	Review Results of Iteration Consolidation																				23MAY98
CSANYL1865	Review Results/Revise Technical Arch.																				25JUN98
CSANYL1870	Determine Systems Management Strategy																				12JUL98
CSANYL1875	Establish Technical/Support Environment																				02AUG98
CSANYL1840	Determine Build Activities																				14JUL98
CSANYL1845	Identify Reusable Components																				29JUL98
CSANYL1850	Review Results of Client/Server Partitioning																				04OCT98
CSANYL1860	Review Results of Server Build																				03OCT98
CSANYL1855	Review Results of Client Build																				24OCT98
CSANYL1880	Analyze/Review Product Quality																				06JAN99
<b>Design Phase</b>																					
CSDESG0255	Define Workflow																				21SEP97
CSDESG0260	Review Results of Business Process Redesign																				11NOV97
CSDESG0265	Develop Schedule for Next Stage																				22NOV97
CSDESG0270	Define Architecture Model																				29NOV97
CSDESG0280	Configure Development & Testing Environment																				18DEC97
CSDESG0285	Review Results of Establish Development and Test																				24DEC97
CSDESG0290	Select and Refine Application Style Guide																				03JAN98
CSDESG0295	Develop Pilot to Test Architecture																				28JAN98
CSDESG0300	Determine Iterations																				10FEB98
CSDESG0375	Develop Training Materials																				04APR98
CSDESG0275	Define Development Tools																				18APR98
CSDESG0305	Design Graphical User Interface																				29APR98
CSDESG0310	Determine Prototype Partitioning																				06MAY98
CSDESG0330	Design Systems and Integration Test Cases																				11MAY98
CSDESG0335	Develop Schedule for Next Stage																				26MAY98
CSDESG0315	Build Prototype																				11JUN98
CSDESG0320	Exercise Prototype																				29JUN98
CSDESG0325	Review Results of GUI and Prototype Development																				06JUL98
CSDESG0340	Finalize Data Model																				16JUL98
CSDESG0355	Review Results of Testing Design																				25JUL98
CSDESG0345	Collect Volumetric Data																				03AUG98
CSDESG0350	Partition the Design																				08AUG98
CSDESG0360	Design and Build Client Components																				03SEP98

Activity ID	Activity Description	J J A S O N D J F M A M J J A S O N D A																		
		J	J	A	S	O	N	D	J	F	M	A	M	J	J	A	S	O	N	D
<b>Design Phase</b>																				
CSDESG0365	Design and Build Server Components																			07SEP98
CSDESG0370	Design and Build Conversion Components																			07SEP98
CSDESG0380	Develop Job Scheduling Processes																			04NOV98
<b>Coding Phase</b>																				
CSCODE0500	Create Server Unit Test Scripts	21JUL97A																		
CSCODE0425	Create Required Data Model																			16NOV97
CSCODE0430	Define Window Class Hierarchy																			10JAN98
CSCODE0475	Create Test Plan																			25FEB98
CSCODE0510	Create Application User Guide																			10FEB98
CSCODE0435	Revise Technical Architecture																			09FEB98
CSCODE0515	Create Administrators Guide																			10MAR98
CSCODE0480	Create Integration and System Test Scripts																			21MAR98
CSCODE0440	Create Data Model																			28MAR98
CSCODE0445	Create User Object Model																			26MAR98
CSCODE0450	Specify Background Processing																			24MAR98
CSCODE0455	Specify External Application Program Interface																			31MAR98
CSCODE0460	Generate Database																			16MAY98
CSCODE0465	Produce Iterative Build Plan																			21JUN98
CSCODE0520	Create Acceptance Test Scripts																			04JUL98
CSCODE0470	Design Database																			13AUG98
CSCODE0485	Create Client Database																			23AUG98
CSCODE0495	Create Server Database																			24AUG98
CSCODE0490	Create Client Unit Test Scripts																			21SEP98
CSCODE0505	Assemble the Application Build																			15SEP98
CSCODE0525	Convert Static and Acquire New Data																			07DEC98
CSCODE0530	Convert Dynamic Data																			08DEC98
CSCODE0535	Collate and Store Metrics																			13DEC98
<b>Testing Phase</b>																				
CSTEST2880	Unit Test Server Components	04AUG97A																		
CSTEST2850	Define Help and Tutorial Styles																			20JAN98
CSTEST2855	Analyze User Tasks and Workflow																			18MAR98
CSTEST2890	Perform Acceptance Tests																			22JUL98
CSTEST2860	Review Prototype																			13JUL98
CSTEST2865	Ensure Data/Transaction Consistency																			15JUL98
CSTEST2895	Perform Production Tests																			23JUL98
CSTEST2870	Define Test Packages																			12AUG98
CSTEST2885	Perform Integration and System Testing																			29SEP98
CSTEST2875	Unit Test Client Components																			14OCT98
<b>Implementation Phase</b>																				
CSIMPL0215	Consider Deployment Strategies																			01OCT97
CSIMPL0220	Evaluate and Define Delivery Increments																			19OCT97
CSIMPL0225	Plan Delivery Increments																			04NOV97
CSIMPL0230	Define Increment Acceptance Criteria																			28OCT97
CSIMPL0235	Prepare End Stage Assessment																			11NOV97
CSIMPL0245	Install and Configure Architecture																			14JAN98
CSIMPL0250	Define End Users and Usability Requirements																			09MAR98
CSIMPL0255	Confirm Scope of Future Iterations																			17MAY98
CSIMPL0260	Conduct End Stage Assessment																			30MAY98
CSIMPL0265	Finalize Non Functional Requirements																			04AUG98
CSIMPL0240	Allocate Hardware and Software Resources																			04NOV98
CSIMPL0270	Install Application Software																			02DEC98
CSIMPL0275	Cut over to new Application Software																			23DEC98
CSIMPL0280	Obtain User Sign-Off																			06JAN99

Activity ID	Activity Description	J J A S O N D J F M A M J J A S O N D A											
<b>New ATM Statement</b>													
<b>Analysis Phase</b>													
ATANYL0200	ATM Enhancement Request Initiation	◆											
ATANYL0205	Develop Enhancement Request Specification	■13JUL97A											
ATANYL0245	Establish Special Change Requirements	■23JUL97A											
ATANYL0210	Submit Enhancement Request	■15JUL97A											
ATANYL0215	Establish Priority of Enhancement	■23JUL97A											
ATANYL0220	Develop Stage Plans & Business Case	■22JUL97A											
ATANYL0345	Review Enhancement Request	■22JUL97A											
ATANYL0225	Allocate Resources To Analyze Request	■03AUG97A											
ATANYL0350	Review Related Documentation	■17AUG97A											
ATANYL0230	Perform Usage Analysis	■24AUG97A											
ATANYL0355	Review Enhancement Request Analysis	■21SEP97											
ATANYL0235	Establish Special Change Requirements	■17DEC97											
ATANYL0240	Plan Enhancement Activities	■22DEC97											
ATANYL0360	Conduct Code Review	■02FEB98											
<b>Design Phase</b>													
ATDESG0805	Revise Physical Data Design	■01OCT97											
ATDESG0815	Tune Physical Design	■08DEC97											
ATDESG0820	Develop/Review Procedures	■19JAN98											
ATDESG0810	Develop Test Scripts	■10FEB98											
<b>Coding Phase</b>													
ATCODE0615	Modify System Logic	■16JUL97A											
ATCODE0605	Review/Create Process Model	■28OCT97											
ATCODE0620	Review/Create Data Model	■28OCT97											
ATCODE0610	Modify Process Model	■09NOV97											
ATCODE0625	Modify Data Model	■09NOV97											
ATCODE0765	Revise/Create Batch Designs	■24NOV97											
ATCODE0770	Revise/Create Program Documentation	■02DEC97											
ATCODE0630	Update Data Dictionary	■03JAN98											
ATCODE0755	Revise/Create User Views	■24DEC97											
ATCODE0760	Revise/Create Dialog Design	■04JAN98											
ATCODE0635	Update Change Specifications	■12JAN98											
ATCODE0775	Code and Compile Programs/Modules	■27JAN98											
ATCODE0640	Create/Select Unit & System Test Cases	■09FEB98											
<b>Testing Phase</b>													
ATTEST0435	Establish Fit with Original Requirement	■17AUG97A											
ATTEST0425	Verify Change Requirements	■27AUG97A											
ATTEST0430	Establish Primary Change Areas	■09SEP97A											
ATTEST0440	Document Change	■10SEP97A											
ATTEST0445	Ensure Logical Change Consistency	■09DEC97											
ATTEST0715	Update Change Specifications	■16DEC97											
ATTEST0450	Produce Test Plan	■16FEB98											
ATTEST0455	Execute Tests	■11FEB98											
ATTEST0720	Update Operating Procedures	■23FEB98											
<b>Implementation Phase</b>													
ATIMPL0555	Allocate Resources To Implement Change	■30SEP97											
ATIMPL0560	Prepare User Briefing	■19JAN98											
ATIMPL0580	Update Enhancement Request Log	■24FEB98											
ATIMPL1045	Conduct Installation Briefings	■24FEB98											
ATIMPL1050	Install Enhancements	■14MAR98											
ATIMPL1055	Conduct Installation Test	■22MAR98											
ATIMPL0565	Hand Over to Operations	■25MAR98											
ATIMPL0570	Initiate Live Running & Perform Operational	■02APR98											
ATIMPL0575	Obtain User Sign-Off	◆02APR98											

Activity ID	Activity Description	J J A S O N D J F M A M J J A S O N D A											
<b>Misc. Maintenance Projects</b>													
<b>Analysis Phase</b>													
MNANYL0635	Maintenance Project Initiation	◆											
MNANYL0645	Define On-line Interface Structure	■ 15JUL97A											
MNANYL0640	Establish Task Scenarios	■ 18AUG97A											
MNANYL0665	Establish Build Plan	■ 02SEP97A											
MNANYL0670	Review/Revise Physical Design Requirements	■ 03SEP97A											
MNANYL0655	Evaluate Storage Requirements	■ 24SEP97											
MNANYL100	Install New Loan Rates	■ 23SEP97											
MNANYL0660	Establish Maintenance Procedures	■ 09DEC97											
MNANYL0650	Determine Privacy and Access Requirements	■ 08FEB98											
<b>Design Phase</b>													
MNDESG0740	Design Physical On-line Architecture	■ 14JUL97A											
MNDESG0760	Design Major System Transactions	■ 20AUG97A											
MNDESG0725	Design User Views	■ 22SEP97											
MNDESG0730	Develop Prototyping Script	■ 08OCT97											
MNDESG20	Design fix to Backup Utility	■ 08OCT97											
MNDESG0735	Produce System Prototype	■ 03NOV97											
MNDESG0749	Update Functional Specification	■ 23DEC97											
MNDESG0750	Update Maintenance Specifications	■ 29DEC97											
<b>Coding Phase</b>													
MNCODE0665	Create Required System Process Model	■ 11AUG97A											
MNCODE0675	Create First Cut Data Design	■ 08SEP97A											
MNCODE0680	Design Physical Batch Architecture	■ 06AUG97A											
MNCODE10	Code fix to Backup Utility	■ 27SEP97											
MNCODE400	Spec New Loan Rates	■ 17SEP97											
MNCODE500	Code New Loan Rates	■ 22SEP97											
MNCODE0685	Create Performance Predictions	■ 11OCT97											
MNCODE0865	Tune Physical Design	■ 18OCT97											
MNCODE0690	Create Development Database	■ 19NOV97											
MNCODE0670	Ensure Data Model is Normalized	■ 07JAN98											
<b>Testing Phase</b>													
MNTEST600	Unit Test New Loan Rates	■ 29SEP97											
MNTEST700	Integration Test New Loan Rates	■ 06OCT97											
MNTEST0780	Specify Audit and Control Requirements	■ 22DEC97											
MNTEST0785	Define Logical System Test Cases	■ 13JAN98											
MNTEST0790	Define Test Control Procedures	■ 20JAN98											
MNTEST0765	Collect Data Volumes	■ 24JAN98											
MNTEST0795	Execute Tests	■ 17FEB98											
MNTEST0775	Validate Composite Data Model	■ 23FEB98											
MNTEST0770	Ensure Data/Transaction Consistency	■ 04MAR98											
<b>Implementation Phase</b>													
MNIMPL900	Install New Loan Rates	■ 07OCT97											
MNIMPL0745	Determine System Acceptance Criteria	■ 07DEC97											
MNIMPL0922	Finalize Test Strategy	■ 26JAN98											
MNIMPL0750	Update Operating Procedures	■ 08MAR98											
MNIMPL0755	Conduct Installation	■ 10MAR98											
MNIMPL0760	Obtain User Sign-off	◆ 10MAR98											
<b>ANWL</b>													
MNANWL0655	Review Problem & Identify Transactions	■ 09JUL97A											
MNANWL0660	Review Required System Specification	■ 04SEP97A											
MNANWL0665	Review Prototype and Specify Logic	■ 19NOV97											